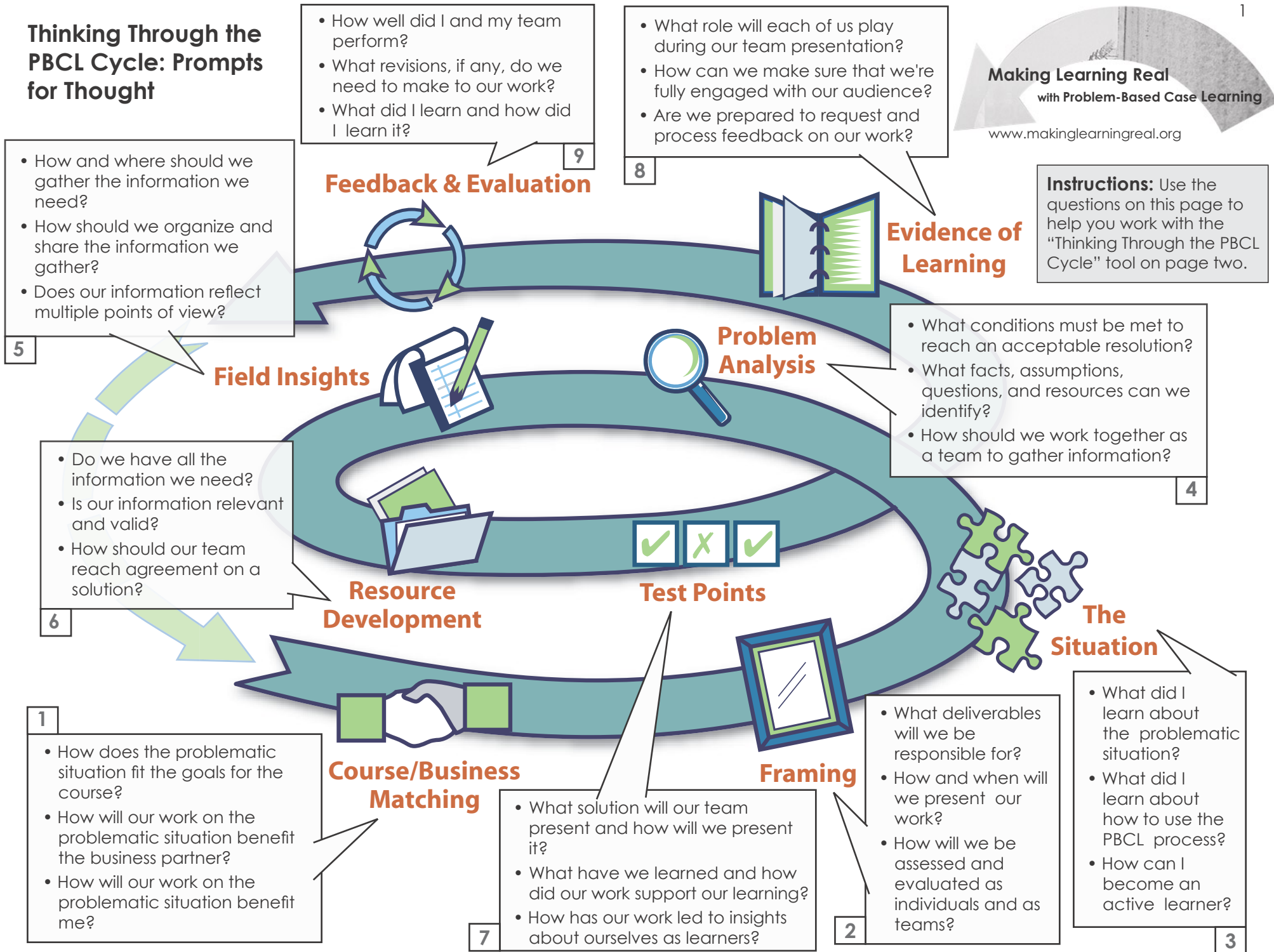


# Thinking Through the PBCL Cycle: Prompts for Thought

**Making Learning Real**  
with Problem-Based Case Learning  
www.makinglearningreal.org

**Instructions:** Use the questions on this page to help you work with the "Thinking Through the PBCL Cycle" tool on page two.



# Thinking Through the PBCL Cycle

Making Learning Real  
with Problem-Based Case Learning

[www.makinglearningreal.org](http://www.makinglearningreal.org)

**Instructions:** This tool can guide you through the stages of the PBCL Cycle. Use the questions from page one and record your thoughts in these blank boxes for each of the PBCL Cycle stages.

